

OCM-049 MEDIA

MACHINE FOR THE WET & DRY SPRAYED CONCRETE APPLICATIONS AND PEA GRAVEL PNEUMATIC CONVEYANCE.

The OCMER OCM-049 MEDIA is a rotor machine able to apply wet & dry sprayed concrete linings and to convey pea-gravel, with effective outputs up to 10-11 cubic metres/h.

The machine find its main field of applications in tunnels' projects, slopes' consolidations, channels' restorations etc. The OCM-049 MEDIA is as well widely adopted for the pneumatic conveyance of pea-gravel when tunnelling with a TBM.

The new patented system of forced extraction of the compressed air from the rotor's chambers allows an high degree of efficiency.

The widely know and experienced rotor working method joined with the unique OCMER's hydraulic clamping system of the rotor between the lubricated gaskets assure a perfect seal of the rotor in any working conditions.

The OCMER OCM-049 MEDIA permits to overturn the hopper and extract the rotor by means of two special hydraulic pistons allowing to a single man to execute the ordinary maintenance operations with a minimum effort in a rapid and safe way.

The machine can be finally supplied in its DOSA version with an integrated synchronized dosing unit for the liquid quick setting chemical admixtures. The digital display on the electric panel will show instantly the r.p.m. of the rotor and the dosing unit's output expressed in litres/h. Other options are: the high pressure water pump and the radio or cable remote control unit



SPECIALIZED TECHNICAL ADVICE



We offer specialized technical consultancy on specific projects, helping you find the solution best suited to your needs.

CUSTOMIZATION



We actively collaborate to propose you tailor-made solutions through specially designed products or by modifying existing ones.



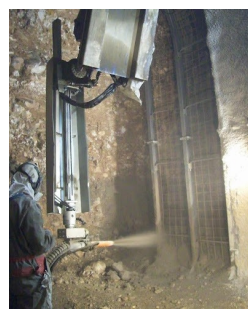
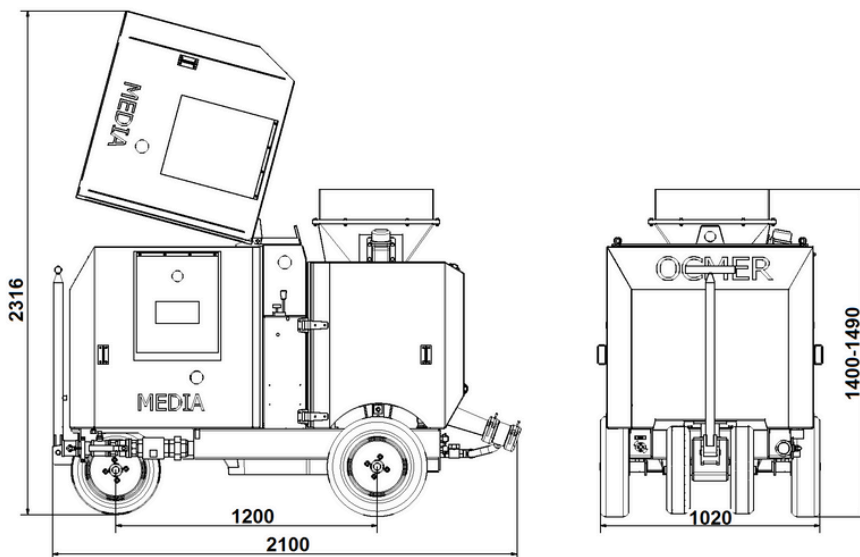
OCM-049 MEDIA

WEIGHTS 970-1150 KG

Capacity of rotor litres	Max theoretical output M ³ /h (*)	Hose size mm	Grain size mm	DRY Delivery Distance Horiz./Vert. M	WET Delivery Distance Horiz./Vert. M	Compressed air consumption M ³ /m at 7-8 BARS
12,5	10,50	50 65	13 20	500/100	/// 80/40	8-10 12-16
18,8	15,79	65	20	500/100	80/40	15-20



(*) Provided the chambers fill and empty completely



ELECTRIC DRIVE

- Installed power: from 8 to 11 Kw (varies depending on the options required), 3 x 400 V 50/60 Hz (other voltages on request)
- Moto-inverter: 7,5 KW, 3x400 V, 50 Hz (other voltages upon request)
- Moto-inverter dosing unit (only DOSA version): 1,5 KW, 3x400 V, 50 Hz;
- Effective flow rate: 2 to 10 M³/h
- Compressed air consumption: from 10.000 to 20.000 litres/m at 7-8 bars
- Electrical panel compliant with: CEE (EN-60204-1; EN-60439-1; 73/23/EEC; 93/68/EEC), degree of protection IP5

PNEUMATIC DRIVE

- Main engine power: 14 KW
- Hydraulic power pack: 3 KW
- Air consumption (engines): 18.000 litres/min at 7-8 bars