



ORP-300 & ORP-302

REFRACTORY MASSES' MIXING AND SPRAYING PLANT

The plants OCMER type ORP/300 and ORP/302 are typically destined to the tundishes' ordinary maintenance into the steel plants.

The refractory mix normally in big bags is charged into the silo from where a electro driven guillotine gate regulate its flow into the mixing group. Here a controlled amount of water is added and then a mixing device provide to feed the vertical pumping group that bring the mix under pressure until the nozzle where compressed air is added.

A min/max level electron-probe located into the pump hopper ensure the continuous feeding of the pumping group in a continuous way.

The water and air pressure are monitored from two dedicated pressure switch. The nozzle man can stop and start the plant by simply close/open the compressed air valve at the nozzle.

The model ORP/302 is endowed with a double charging silo and a double mixing devices so to can process tow different refractory mixers with one and the same plant.

The mixes can be applied manually of with a robot arm.

SPECIALIZED TECHNICAL ADVICE



We offer specialized technical consultancy on specific projects, helping you find the solution best suited to your needs.

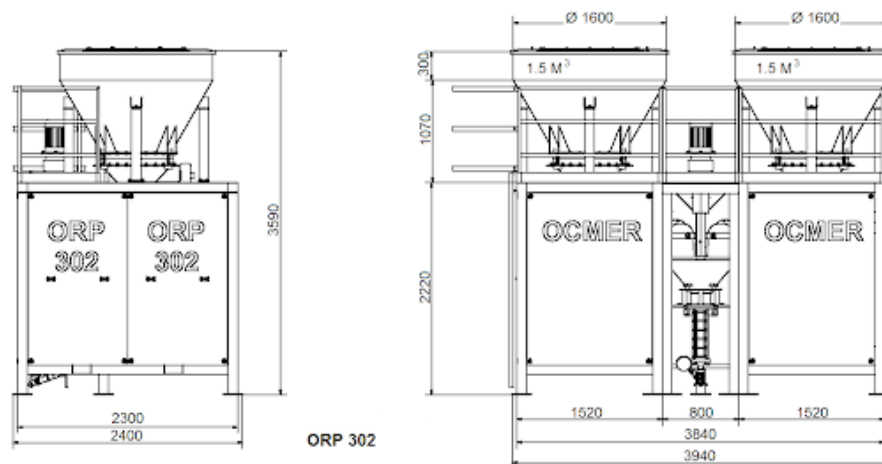
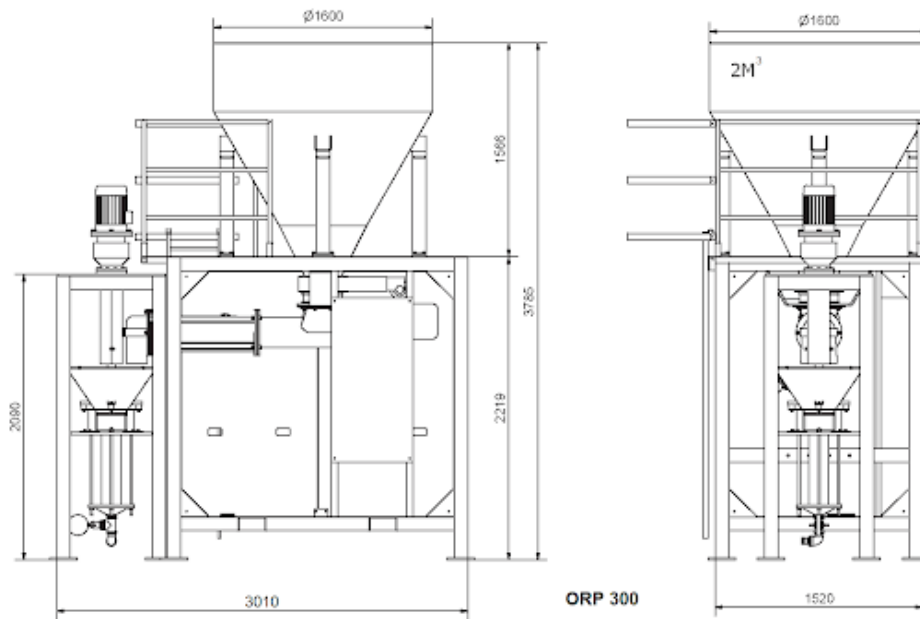
CUSTOMIZATION



We actively collaborate to propose you tailor-made solutions through specially designed products or by modifying existing ones.

ORP-300 & ORP-302

WEIGHTS Kg. 1.650 (ORP 300) / Kg 2.400 (ORP 302)



TECHNICAL DATA

- Output: adjustable till 4 M³/h
- Pressure: up to 30 bars
- Grain Size: up to 6 mm
- Water Dosage: from 300 to 1600 liters/h
- Silo's Capacity : 1.5 - 2 M³ (othe capacity upon request)